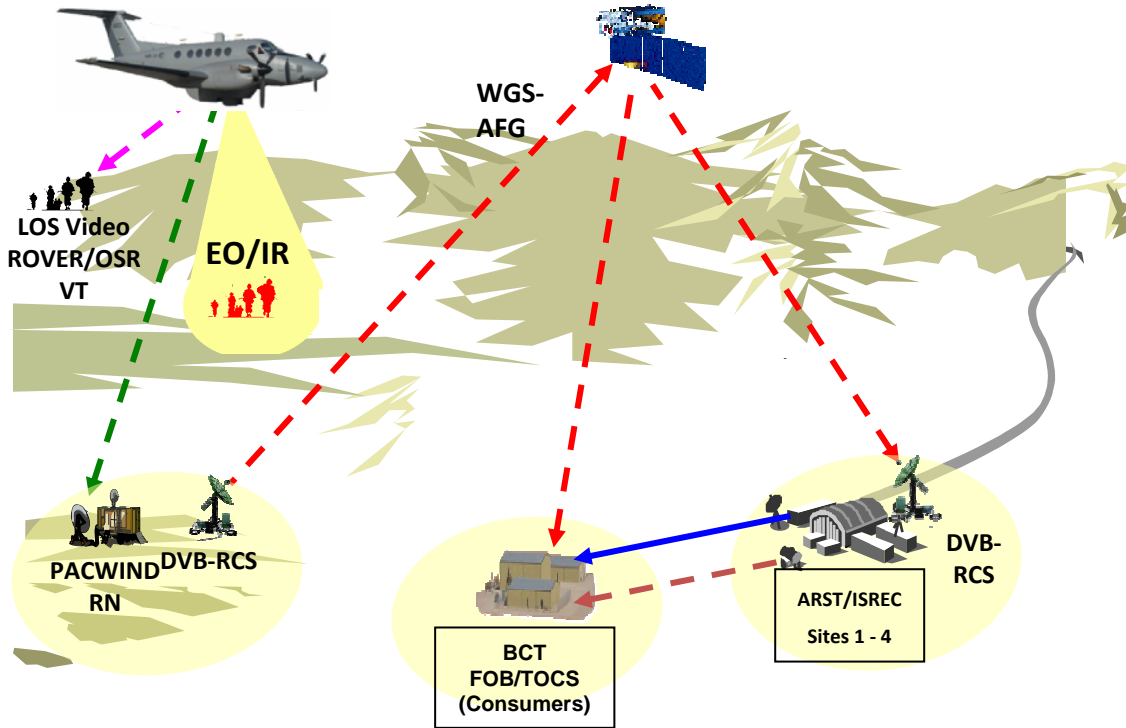


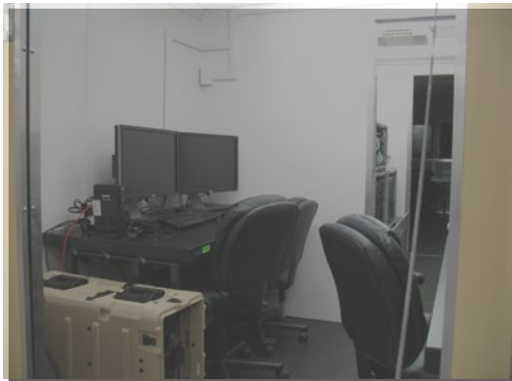
A flexible capability that supports ISR system testing, integration, collection operations, and multi-int analysis



*Mobile Processing
Exploitation Dissemination
Laboratory*



A flexible capability that supports ISR system testing, integration, collection operations, and analysis



MPEDL Key features:

- 240V 100 amp shore power and has a 15KVA diesel generator with a 20 gallon tank
- Compact Package: 32' x 8' and with the 4' tongue; length is 36'.
- Weight 14,000 lbs
- Designed to be pulled with a class IV receiver type hitch
- 33' foot pneumatically extended mast
- Three 15,000 BTU air conditioners.
- Pull-out awning
- Halogen flood for exterior lighting

MPEDL Key features:

- Self contained system ready for "Plug & Play" operations
- Flexible design enables multiple mission sets (systems integration, training laboratory, operational PED)
- Scalable Workstation support for 2 operator work stations or more
- Ability to integrate unlimited Sensor feeds
- Ability to store of imagery information
- Transportable by non-CDL truck, Rail, Commercial Carrier and C-130
- Cost-effectively upgradable to keep pace with new technology

Radiance Technologies under the direction of PM ARES designed and built the Mobile Processing Exploitation Dissemination Laboratory (MPEDL) to support critical Department of Defense (DoD) ISR missions.

The system supports:

- Systems Integration
- Testing\Development
- Mobile C4ISR Operations
- Intelligence analysis

MPEDL is:

- Open Architecture
- Platform\Sensor Agnostic
- Reconfigurable

