

When ordering parts, always state:  
MODEL NO. - PRODUCT NO. - QUANTITY -  
PART NUMBER - DESCRIPTION

For Electric Details also state:  
VOLTAGE - WATTAGE

# 579(XX).(X)(X)(X)(X) Modularized Roof Top Air Conditioner

**USA**  
SERVICE OFFICE  
Dometic Corporation  
509 South Poplar Street  
Lagrange, IN 46761  
260-463-4858

**CANADA**  
Dometic Distribution  
866 Langs Drive  
Cambridge, Ontario  
CANADA N3H 2N7  
519-653-4390

**For Service Center  
Assistance Call:**  
800-544-4881

## PARTS LIST

<b>MODEL Number</b>	<b>Product Number</b>
57912.531(X)	991731794
57912.631(X)	991731774
57915.331(X)	991760307
57915.336(X)	991760386
57915.531(X)	991731776
57915.536(X)	991760375
57915.541(X)	991760426
57915.546(X)	991760427
57915.631(X)	991731777
57915.731(X)	991760388

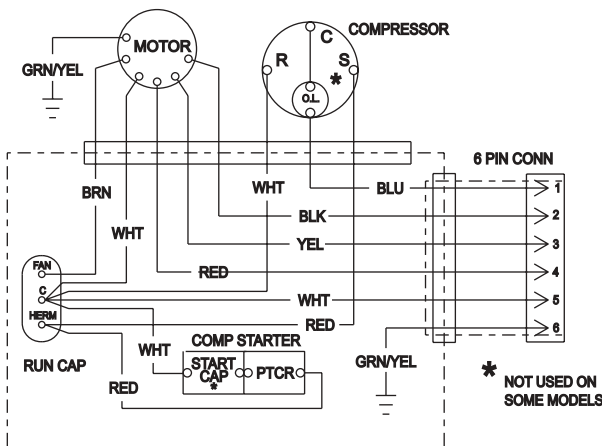
# Specification

Model Number	57912.531(X)	57912.631(X)	57915.33X(X)	57915.53X(X)	57915.54X(X)	57915.631(X)	57915.731(X)
Nominal BTU Capacity*	11,000	12,000	13,500	13,500	13,500	13,500	13,500
Volts/Phase/Hertz (each circuit)	115 AC/1/60						
Compressor Run Amps	8.0	8.5	11.4	12.1	11.3	11	11.3
Compressor LRA	53	48.3	58	59	62.0	54.4	56
Fan Motor Run Amps	2.5	2.5	2.5	2.5	2.5	2.5	2.5
Fan Motor LRA	5.8	5.8	5.8	5.8	5.8	5.8	5.8
Heater Amps/Watts	12.7/1530	12.7/1530	12.7/1530	12.7/1530	12.7/1530	12.7/1530	12.7/1530
Wire size**	Up to 24 ft.- Use No. 12AWG Copper Conductors						
	AC Circuit Protection 20 Amp Time Delay Fuse or 20 Amp HACR Circuit Breaker						
DC Circuit Protection	Installation must comply with all National, State, Province, and/or local electrical codes.						
Refrigerant	R-22						
System Refrigerant Charge (ozs.)	18.5	18.0	15.5	16.5	16.0	16.5	15.0
Installed Weight (lbs.)	94	94	94	94	94	94	94
Generator Size (KW) - Min***							
	1 Unit	2.5	2.5	3.5	3.5	3.5	3.5
	2 Units	4.0	4.0	5.0	5.0	5.0	5.0

- \* Maximum unit performance achieved at full rated voltage.
- \*\* For lengths over 24 feet, consult the National Electrical Code.
- \*\*\* Dometic Corporation gives general guidelines for generator requirements. These guidelines come from experiences people have had in actual applications. When sizing the generator, the total power usage of your recreational vehicle must be considered. Also keep in mind generators lose power at high altitudes and from lack of maintenance.

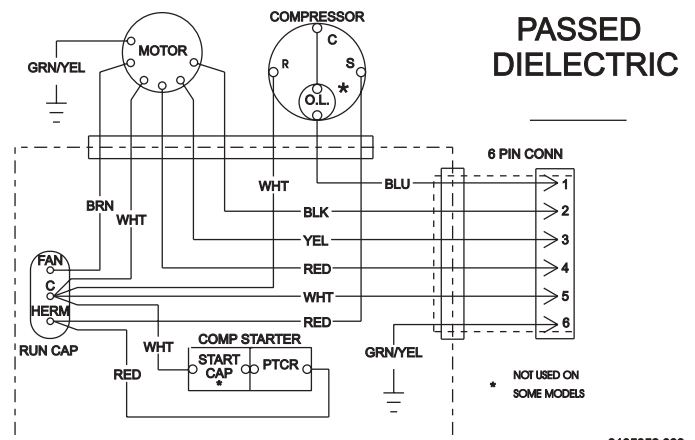
# Wiring Diagram

Early Version

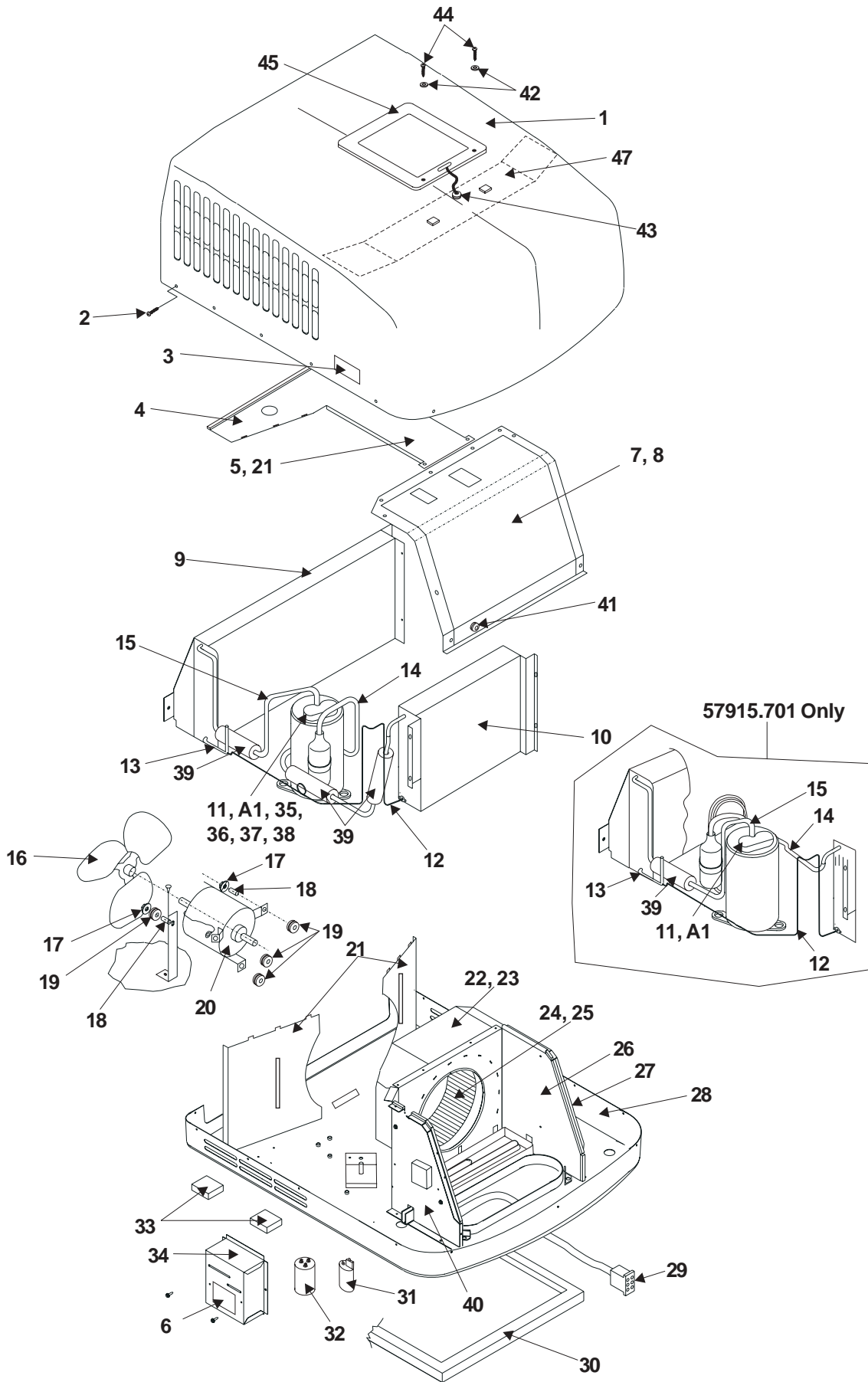


3105052.017

Later Version



3105052.033



\*\* Designates Discontinue Date

## Designates Start Date

Index No.	Description	Part No.	57912.531(X)	57912.631(X)	57915.331(X)	57915.336(X)	57915.531(X)	57915.536(X)	57915.541(X)	57915.546(X)	57915.631(X)	57915.731(X)	
1	Shroud	SEE NOTE 1	A	B	C	D	E	F	G	H	I	J	
2	Screw, Open End Shroud (14 req.)	SEE NOTE 2	A	B	C	D	E	F	G	H	I	J	
	Screw, Closed End Shroud (4 req.)	SEE NOTE 2	A	B	C	D	E	F	G	H	I	J	
3	Decal, Shroud Duo-Therm (2 req.)	3101380.016	A	B	C	D	E	F	-	-	I	J	2/14/03**
4	Cover Condenser	309383.000	A	B	C	D	E	F	-	-	I	J	10/12/03**
5	Brace, Bulkhead	3100357.023	A	B	C	D	E	F	-	-	G	H	10/12/03**
6	Decal, Field Wiring	3105052.017	A	B	C	D	E	F	-	-	G	H	8/24/03**
	Decal, Field Wiring	3105052.025	A	B	C	D	E	F	G	H	I	J	8/25/03##
7	Insulation, Evaporator Cover	3105014.066	A	B	C	D	E	F	G	H	I	J	
8	Cover, Evaporator	314885.002	A	B	C	D	E	F	G	H	I	J	
9	Coil, Condenser	3100817.034	A	B	C	D	E	F	G	H	I	J	
10	Coil, Evaporator	3107338.018	A	B	C	D	E	F	G	H	I	J	
11	Asm, Compressor-2P15S3R126B-1F	3104355.023	A	-	-	-	-	-	-	-	-	-	
A1	Overload	3100250.400	A	-	-	-	-	-	-	-	-	-	
	Asm, Compressor-RKA5510EXA	3103830.026	-	B	-	-	-	-	-	-	-	-	
A1	Overload	3100250.285	-	B	-	-	-	-	-	-	-	-	
	Asm, Compressor-80611342	3109108.013	-	-	C	D	-	-	-	-	-	-	
A1	Overload	3100250.384	-	-	C	D	-	-	-	-	-	-	
	Asm, Compressor-2P19C3R126A-2A	3104355.007	-	-	-	-	E	F	-	-	-	-	
A1	Overload	3100250.301	-	-	-	-	E	F	-	-	-	-	
	Asm, Compressor- 2P20C3R126A-1J	3102547.001	-	-	-	-	-	-	G	H	-	-	
A1	Overload	3100250.202	-	-	-	-	-	-	G	H	-	-	
	Asm, Compressor-RKB5513EXA	3104465.004	-	-	-	-	-	-	-	-	I	-	
A1	Overload	3100250.277	-	-	-	-	-	-	-	-	I	-	
	Asm, Compressor-QK185CBA	3307851.000	-	-	-	-	-	-	-	-	-	J	
A1	Overload	3100250.442	-	-	-	-	-	-	-	-	-	J	
12	Capillary Tube	3100245.582	A	B	-	-	-	-	-	-	-	-	
	Capillary Tube	3100245.574	-	-	C	D	-	-	G	H	-	J	
	Capillary Tube	3100245.533	-	-	-	-	E	F	-	-	-	-	
	Capillary Tube	3100245.525	-	-	-	-	-	-	-	-	I	-	
13	Line, Process	315761.082	A	B	-	D	E	F	-	-	I	-	
	Line, Process	315761.138	-	-	C	-	-	-	G	H	-	J	
14	Line, Suction	3108689.013	A	-	-	-	-	-	-	-	-	-	
	Line, Suction	3104236.017	-	B	-	-	-	-	-	-	G	-	
	Line, Suction	3109182.018	-	-	C	D	-	-	-	-	-	-	
	Line, Suction	3108682.000	-	-	-	-	E	F	G	H	-	-	
	Line, Suction	3108682.018	-	-	-	-	-	-	-	-	-	J	
15	Line, Discharge	3108683.016	A	-	-	-	E	F	G	H	-	-	
	Line, Discharge	3108688.007	-	B	-	-	-	-	-	-	I	-	
	Line, Discharge	3109184.030	-	-	C	D	-	-	-	-	-	-	
	Line, Discharge	3108683.024	-	-	-	-	-	-	-	-	-	J	
16	Blade, Fan	3107914.008	A	B	C	D	E	F	G	H	I	J	
17	Nut, Flange Fan Motor (4 req.)	306342.003	A	B	C	D	E	F	G	H	I	J	
18	Spacer, Fan Motor (4 req.)	308046.002	A	B	C	D	E	F	G	H	I	J	
19	Grommet, Fan Motor (4 req.)	3100230.022	A	B	C	D	E	F	G	H	I	J	
20	Motor, Fan	3108706.916	A	B	C	D	E	F	G	H	I	J	
21	Bulkhead, Condenser	317923.001	A	B	C	D	E	F	-	-	I	J	10/12/03**
	Condenser Bulkhead	3308459.001	A	B	C	D	E	F	G	H	I	J	10/13/03##
22	Insulation, Blower Housing	3104153.014	A	B	C	D	E	F	G	H	I	J	
23	Housing, Blower	3100865.033	A	B	C	D	E	F	G	H	I	J	
24	Wheel, Blower	3104887.009	A	B	C	D	E	F	G	H	I	J	
25	Ring, Blower Inlet	3106415.007	A	B	C	D	E	F	G	H	I	J	
26	Bulkhead, Evaporator	3100831.084	A	B	C	D	E	F	G	H	I	J	
27	Insulation, RH Evaporator Bulkhead	3108137.013	A	B	C	D	E	F	G	H	I	J	
28	Kit, Basepan	3108709.928	A	B	C	D	E	F	G	H	I	J	
29	Plug, 6 Pole	3106625.019	A	B	C	D	E	F	G	H	I	J	

Index No.	Description	Part No.	57912.531(X)	57912.631(X)	57915.331(X)	57915.336(X)	57915.531(X)	57915.536(X)	57915.541(X)	57915.546(X)	57915.631(X)	57915.731(X)
30	Gasket, Roof	3108678.008	A	B	C	D	E	F	G	H	I	J
31	Starter, Compressor Motor	3106732.005	A	B	C	D	E	F	G	H	I	J
32	Fan/Run Capacitor	3100248.594	A	-	-	-	-	-	-	-	-	-
	Fan/Run Capacitor	3100248.339	-	B	-	-	-	-	-	-	I	-
	Fan/Run Capacitor	3100248.586	-	-	C	D	-	-	G	H	-	-
	Fan/Run Capacitor	3100248.420	-	-	-	-	E	F	-	-	-	-
	Fan/Run Capacitor	3100248.487	-	-	-	-	-	-	-	-	-	J
33	Block, Foam (7 req.)	3100587.009	A	B	C	D	E	F	G	H	I	J
34	Box, Electrical	3108030.002	A	B	C	D	E	F	G	H	I	J
35	Grommet, Compressor (3 req.)	3100238.181	A	-	-	-	E	F	G	H	-	J
	Grommet, Compressor (3 req.)	3100238.207	-	B	-	-	-	-	-	-	I	-
	Grommet, Compressor (3 req.)	3100238.165	-	-	C	D	-	-	-	-	-	-
36	Sleeve, Compressor (3 req.)	3100239.072	A	-	C	D	E	F	G	H	-	J
	Sleeve, Compressor (3 req.)	3100239.122	-	B	-	-	-	-	-	-	I	-
37	Nut, Flange Compressor (3 req.)	306342.002	A	B	C	D	E	F	G	H	I	J
38	Screw, Compressor (3 req.)	307987.021	A	-	C	D	E	F	G	H	-	J
39	Insulation ( 1.5' req.)	3109712.004	-	B	C	D	E	F	G	H	I	J
40	Insulation, Evaporator LH	3108137.005	A	B	C	D	E	F	G	H	I	J
41	Strain Relief, Evaporator Shroud	302994.019	-	-	-	D	-	F	-	H	-	-
42	Washer (2 req.)	309513.039	-	-	-	D	-	F	-	H	-	-
43	Grommet	3109283.014	-	-	-	D	-	F	-	H	-	-
44	Screw (2 req.)	3105445.005	-	-	-	D	-	F	-	H	-	-
45	Panel, Solar	3109856.009	-	-	-	D	-	F	-	H	-	-
46	Indicator, Charge (not shown)	3109855.019	-	-	-	D	-	F	-	H	-	-
47	Bracket	3307853.006	-	-	-	D	-	F	-	H	-	-

**NOTE 1:** Open End Shroud (Shell White) 3108239.009      **Customer Options (Required) 57912.(X)31(X)**      **57915.(X)(X)(X)(X)**  
 Open End Shroud (Polar White) 3108239.017      Electronic Control Kit      3109226.005      3109226.005  
 Open End Shroud (Light Gray) 3108239.025      Comfort Control Center      3109228.001      3109228.001  
 \*Closed End Shroud (Shell White) 3308084.007      Control Kit, Analog Cool/Furnace      3107541.009      3107541.009  
 \*Closed End Shroud Polar White) 3308084.015      Kit, Remote CC IR CF      \_\_\_\_\_      3308417.009  
 \*Closed End Shroud (Gray) 3308084.023      Kit, Remote CC IR CFHS      \_\_\_\_\_      3308417.025  
 \*Closed End Shroud can not be painted.

**NOTE 2:** Screw, Open End Shroud 313685.001 (Qty. 12)      **Customer Options (Not Required)**  
 Screw, Closed End Shroud 3308261.001 (Qty. 4)      Duct Kit      3106775.004      3106775.004  
                                                                                  Bolt Kit, 6"      3100895.006      3100895.006  
                                                                                  Bolt Kit, 9.5"      3100895.014      3100895.014  
                                                                                  Screen, Decorative      3101701.005      3101701.005  
                                                                                  Cover Kit, Return Air SW      3105007.003      3105007.003  
                                                                                  Cover Kit, Return Air PW      3105007.011      3105007.011  
                                                                                  Cover Kit, Return Air SW      3105007.037      3105007.037  
                                                                                  Cover Kit, Return Air PW      3105007.045      3105007.045  
                                                                                  Cover Kit, Return Air SW      3105935.005      3105935.005  
                                                                                  Cover Kit, Return Air PW      3105935.013      3105935.013  
                                                                                  Cover Kit, Return Air SW      3105935.039      3105935.039  
                                                                                  Cover Kit, Return Air PW      3105935.047      3105935.047  
                                                                                  Asm., Return Air Grill SW      3308120.009      3308120.009  
                                                                                  Asm., Return Air Grill PW      3308120.017      3308120.017  
                                                                                  Air Box Assembly SW      3107210.001      3107210.001  
                                                                                  Air Box Assembly PW      3107210.019      3107210.019  
                                                                                  Box Assembly Complete SW      3107206.009      3107206.009  
                                                                                  Box Assembly Complete PW      3107206.017      3107206.017  
                                                                                  Sensor Kit, 20'      3106486.008      3106486.008  
                                                                                  Sensor Kit, 60'      3106486.016      3106486.016  
                                                                                  Sensor Kit, 40'      3106486.024      3106486.024  
                                                                                  Heat Kit      3101121.030      3101121.030