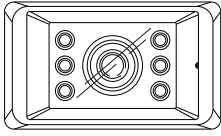


Voyager®

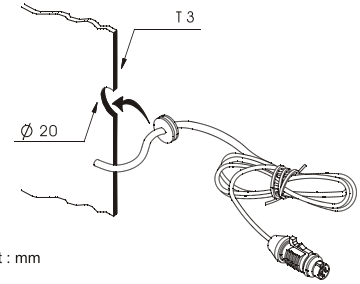
CCIR SYSTEM VBCS 150P



VBCS150P Features:

- High Resolution, 1/3" CCD B/W Camera
- Compact / Lightweight Aluminum Die Cast Body
- Waterproof Design
- Microphone
- Normal / Mirror Image switch
- Adjustable Mounting Angle
- Wide Angle Lens
- Aluminum Bracket and SS. Hardware included
- IR LED Low Light Enhancement

Recommended grommet Hole & Mtg. thickness

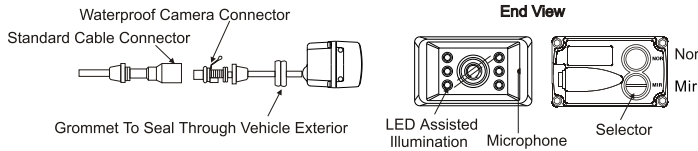


Unit : mm

Contents:

Camera
Bracket
Hardware Kit

Installation and Pin Out:



Camera to bracket hardware

Specifications	Qty
Hex Socket Head M4X10L Stainless screws	4
Spring Washers 4X7X1.2mm Stainless	4
Flat Washers 4x10x.5mm Stainless	4
Allen wrench	1

Bracket to vehicle hardware

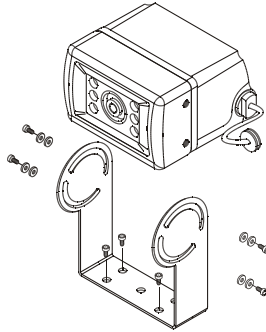
Specifications	Qty
Tapping P/H W/Washer 5X16mm Stainless screws	4
Machine Screw T/H M5X16mm Stainless	4
Locking nuts M5 stainless	4

Installation

Screw For Use

Hex Socket Head M4X10L Stainless screws
Spring Washers 4X7X1.2mm Stainless
Flat Washers 4x10x.5mm Stainless
Allen wrench

Tapping P/H W/Washer 5X16mm Stainless screws
Machine Screw T/H M5X16mm Stainless
Locking nuts M5 stainless

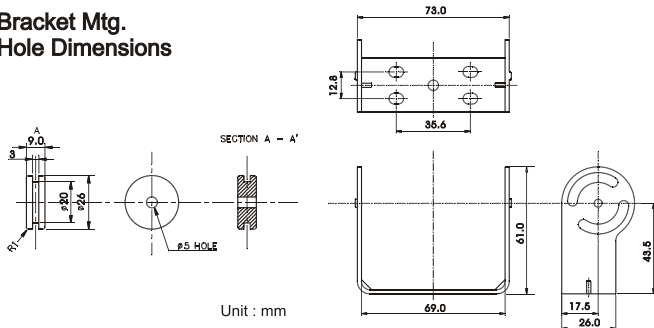


Specifications

Signal System : CCIR
Image Sensor : 1/3" B/W CCD W/electronic auto-iris
320K pixels
Viewing Angle : 120°(H), 90°(V)
Outer Dimensions : 68 (W) X 40 (H) X 64 (D) mm
2.7(W) X 1.6 (H) X 2.6 (D) Inch
Weight : 0.3kg/ 0.6lbs

* Specifications are subject to change without notice.

Bracket Mtg. Hole Dimensions



Unit : mm

ASA
AUDIOVOX SPECIALIZED APPLICATIONS, L.L.C.
www.asaelectronics.com